



EMPATHY  
SCHOOL



# Nature Scholar

*\*Kindergarten*

At Empathy School, we believe that meaningful learning happens when children feel seen, connected, and inspired. Our approach blends academic curiosity with emotional awareness, sustainability with creativity, and language with life. We nurture confident communicators who care about the world around them starting with their own communities.





EMPATHY  
SCHOOL

# Schedule

Rooted in local culture and guided by values of empathy, respect, and inclusion, we celebrate both **Bahasa Indonesia and English** as bridges for connection and expression. Through storytelling, nature-based projects, and collaboration with local partners, students learn to see the world from multiple perspectives.

Time : 9am - 3pm

	Monday	Tuesday	Wednesday	Thursday	Friday
<b>8:45 - 9:00</b>	Morning Circle	Morning Circle	Morning Circle	Morning Circle	Morning Circle
<b>Period 1 9:00 - 9:45</b>	Cooking or Science	Gardening- all	Art / Creative Play	P.E. All KG	Swim or Creative Play
<b>Period 2 9:45 - 10:30</b>		Indonesian levels		Theme Event	
<b>10:30 - 10:50</b>	Watermelon Break				
<b>Period 3 10:50 - 11:35</b>	Montessori Inspired	Montessori Inspired	Montessori Inspired	Montessori Inspired	Montessori Inspired
<b>Period 4 11:35 - 12:10</b>					Bahasa Story
<b>12:10 - 12:25</b>	Lunch Oversight	Lunch Oversight	Lunch Oversight	Lunch Oversight	Lunch Oversight
<b>12:20 - 12:50</b>	Lunch Break				
<b>Period 5 12:50 - 1:40</b>	Music or Swimming	P.E. All KG	Family Connection	Story Time - all	Clay
<b>Period 6 1:40 - 2:30</b>		Story Time - all	SEL - All KG	Indonesian levels	SEL All KG
<b>2:30 - 2:50</b>	Watermelon Break				
<b>End of Day 2:50 - 3:00</b>	Afternoon Circle	Afternoon Circle	Afternoon Circle	Afternoon Circle	Afternoon Circle



EMPATHY  
SCHOOL

# Nature Scholar



**IDR 8,800,000** per week per student

includes **plant-based lunch**, learning materials, and access to both the swimming pool and the trampoline park.



EMPATHY  
SCHOOL

Empathy



# Nature Scholar



At Empathy School, we believe that meaningful learning happens when children feel seen, connected, and inspired. Our approach blends academic curiosity with emotional awareness, sustainability with creativity, and language with life. We nurture confident communicators who care about the world around them starting with their own communities.





EMPATHY  
SCHOOL

# Schedule

Rooted in local culture and guided by values of empathy, respect, and inclusion, we celebrate both **Bahasa Indonesia and English** as bridges for connection and expression. Through storytelling, nature-based projects, and collaboration with local partners, students learn to see the world from multiple perspectives.

Time : 9am - 3pm

MONDAY	TUESDAY	WEDNESDAY	THURSDAY	FRIDAY
Morning Circle	Morning Circle	Morning Circle	Morning Circle	Morning Circle
Functional English	Art	Functional English	P.B.L	Functional English
S.E.L	Music	Indonesian Studies	Literacy	Permaculture
Watermelon Time				
P.B.L	Literacy	SCIENCE	Clay Class	STEAM
P.E	STEAM	Wood Carving	Art	S.E.L
Lunch oversight	Lunch oversight	Lunch oversight	Lunch oversight	Lunch oversight
Lunch break				
D.E.A.R				
Being Human	Experiential	Indonesian Heritage	Thematic + Community	Experiential
Watermelon Time				
Journal & Reflection	Journal & Reflection	Journal & Reflection	Journal & Reflection	Journal & Reflection

D.E.A.R : Drop Everything and Read



EMPATHY  
SCHOOL

# Nature Scholar



**IDR 8,800,000** per week per student

includes **plant-based lunch**, learning materials, and access to both the swimming pool and the trampoline park.



EMPATHY  
SCHOOL

# SUMMER

## CAMP

2 0 2 6

**Empathy School International** welcomes young learners to Summer Camp 2026; weeks of nature-based adventure from June 22 to July 31 2026 that nurtures curiosity, creativity, and compassion. Developed at Harvard and guided by educators who combines the Cambridge curriculum with project-based learning and social-emotional growth.

This year's Summer Camp offers three programs; Wonderful Garden, Junior Explorer, and Changemakers, each designed for different age groups to explore creativity, innovation, and collaboration through hands-on, nature-inspired activities.

Check out the weekly schedule and discover how Empathy School brings learning to life this Summer.

[www.empathy.school](http://www.empathy.school)

# Table of Contents



## SCHEDULE

Wonderful Garden Week 1.....	3
Wonderful Garden Week 2.....	4
Wonderful Garden Week 3.....	5
Wonderful Garden Week 4.....	6
Wonderful Garden Week 5.....	7
Wonderful Garden Week 6.....	8



## SCHEDULE

The Junior Explorer Group Week 1.....	9
The Junior Explorer Group Week 2.....	10
The Junior Explorer Group Week 3.....	11
The Junior Explorer Group Week 4.....	12
The Junior Explorer Group Week 6.....	13
The Junior Explorer Group Week 7.....	14



## SCHEDULE

The Change Makers Group Week 1.....	15
The Change Makers Group Week 2.....	16
The Change Makers Group Week 3.....	17
The Change Makers Group Week 4.....	18
The Change Makers Group Week 5.....	19
The Change Makers Group Week 6.....	20



# Week 1

## Wonderful Garden (Kindergarten) 2 to 6 years old

**Camp Hours: 8:45 AM to 3:00 PM (daily)**

Monday	Tuesday	Wednesday	Thursday	Friday
Check-in / Arrival	Check-in / Arrival	Check-in / Arrival	Check-in / Arrival	Check-in / Arrival
Morning circle	Energizer game	Energizer game	Energizer game	Energizer game
Art & Craft	Organic Chocolate making	Bubble making	Fun Gardening Soil block	Bugastic
Watermelon Time				
Hero Plants	Reduce, Reuse, Recycle	Rainbow Smoothies	Scvanger Hunt Flora & Fauna	My Dream Garden
Lunch break				
King and Queen of Jungle	Terracota/ Clay making	"What is your spirit animal?" Animal mask	Indonesian Heritage Balinese Dance	Empathy Master Chef Sop Buah
Being Human Journal & Reflection				

# ★ Week 2

## Wonderful Garden (Kindergarten) 2 to 6 years old

**Camp Hours: 8:45 AM to 3:00 PM (daily)**

Monday	Tuesday	Wednesday	Thursday	Friday
Check-in / Arrival	Check-in / Arrival	Check-in / Arrival	Check-in / Arrival	Check-in / Arrival
Morning circle	Energizer game	Energizer game	Energizer game	Energizer game
Trash walk Waste management	Nature Collage	Padi Seedbomb	Mandala Making	Coconut Leaf Crown
Watermelon Time				
Offering Making	Terracota/ Clay making	Frog Ladder	Rainbow Smoothies	Gebogan
Lunch break				
Eco Print	Indonesian Heritage	Animal Puppet making	Ogoh-ogoh making	Let's get muddy!/ Creative Play
Being Human Journal & Reflection				

# ★ Week 3

## Wonderful Garden (Kindergarten) 2 to 6 years old

**Camp Hours: 8:45 AM to 3:00 PM (daily)**

Monday	Tuesday	Wednesday	Thursday	Friday
Check-in / Arrival	Check-in / Arrival	Check-in / Arrival	Check-in / Arrival	Check-in / Arrival
Morning circle	Energizer game	Energizer game	Energizer game	Energizer game
Bubble Making	Nature Collage	Organic Chocolate Making	Fun Gardening – Soil Block	Bugastic
Watermelon Time				
Hero Plants	Reduce, Reuse, Recycle	Rainbow Smoothies	Scavenger Hunt: Flora & Fauna	My Dream Garden
Lunch break				
Terracotta / Clay Making	Indonesian Heritage	Animal Puppet making	Ogoh-ogoh making	Coconut Leaf Crown
Being Human Journal & Reflection				

# ★ Week 4

## Wonderful Garden (Kindergarten) 2 to 6 years old

**Camp Hours: 8:45 AM to 3:00 PM (daily)**

Monday	Tuesday	Wednesday	Thursday	Friday
Check-in / Arrival	Check-in / Arrival	Check-in / Arrival	Check-in / Arrival	Check-in / Arrival
Morning circle	Energizer game	Energizer game	Energizer game	Energizer game
Art & Craft	Terracotta / Clay Making	Bubble Making	Padi Seedbomb	Coconut Leaf Crown
Watermelon Time				
Reduce, Reuse, Recycle	Hero Plants	Rainbow Smoothies	Scavenger Hunt: Flora & Fauna	My Dream Garden
Lunch break				
Eco Print	Frog Ladder	Animal Mask (Spirit Animal)	Indonesian Heritage – Balinese Dance	Let's Get Muddy! / Creative Play
Being Human Journal & Reflection				

# ★ Week 5

## Wonderful Garden (Kindergarten) 2 to 6 years old

**Camp Hours: 8:45 AM to 3:00 PM (daily)**

Monday	Tuesday	Wednesday	Thursday	Friday
Check-in / Arrival	Check-in / Arrival	Check-in / Arrival	Check-in / Arrival	Check-in / Arrival
Morning circle	Energizer game	Energizer game	Energizer game	Energizer game
Trash Walk & Waste Management	Nature Collage	Organic Chocolate Making	Mandala Making	Bugastic
Watermelon Time				
Reduce, Reuse, Recycle	Rainbow Smoothies	My Dream Garden	Hero Plants	Scavenger Hunt: Flora & Fauna
Lunch break				
King & Queen of the Jungle	Terracotta / Clay Making	Animal Puppet Making	Ogoh-ogoh Making	Empathy Master Chef – Sop Buah
Being Human Journal & Reflection				

# ★ Week 6

## Wonderful Garden (Kindergarten) 2 to 6 years old

**Camp Hours: 8:45 AM to 3:00 PM (daily)**

Monday	Tuesday	Wednesday	Thursday	Friday
Check-in / Arrival	Check-in / Arrival	Check-in / Arrival	Check-in / Arrival	Check-in / Arrival
Morning circle	Energizer game	Energizer game	Energizer game	Energizer game
Art & Craft	Padi Seedbomb	Bubble Making	Fun Gardening – Soil Block	Coconut Leaf Crown
Watermelon Time				
Reduce, Reuse, Recycle	My Dream Garden	Hero Plants	Rainbow Smoothies	Scavenger Hunt: Flora & Fauna
Lunch break				
Eco Print	Indonesian Heritage	Animal Mask (Spirit Animal)	Frog Ladder	Let's Get Muddy! / Creative Play
Being Human Journal & Reflection				



# Week 1

## The Junior Explorer Group (Lower School) 7 to 10 years old

Camp Hours: 8:45 AM to 3:00 PM (daily)

Monday	Tuesday	Wednesday	Thursday	Friday
Check-in / Arrival	Check-in / Arrival	Check-in / Arrival	Check-in / Arrival	Check-in / Arrival
Morning circle Camp Rules / Energizer game	Energizer game	Energizer game	Energizer game	Energizer game
Exploring Subak	Recycle Paper	Colourfull Tea	Solar Panel Car	Water transfer
Watermelon Time				
Natural Dyes	Reduce, Reuse, Recycle Board Game	Gebogan Making	Terracota/ Clay making	Balinese instrument Kul- Kul
Lunch break				
Soap Making	"Where are you?" Compass making	Shelter making	Traditional Jamu Making	Campfire Sate Tempe
Being Human Journal & Reflection				





# Week 2

## The Junior Explorer Group (Lower School) 7 to 10 years old

**Camp Hours: 8:45 AM to 3:00 PM (daily)**

Monday	Tuesday	Wednesday	Thursday	Friday
Check-in / Arrival	Check-in / Arrival	Check-in / Arrival	Check-in / Arrival	Check-in / Arrival
Morning circle Camp Rules / Energizer game	Energizer game	Energizer game	Energizer game	Energizer game
Pine + Apple 2.0	Coconut Creation	Pine+Apple	Candle making	Paku Pipit Making
Watermelon Time				
Reduce, Reuse, Recycle T-shirt to bag	Coconut Party!	Kite making	Mandala Making	Echo Printing
Lunch break				
From seed to table Pak Rice	Coconut Climbing	Organic chocolate making	Let's get muddy!	Megibung
Being Human Journal & Reflection				



# ★ Week 3

## The Junior Explorer Group (Lower School) 7 to 10 years old

**Camp Hours: 8:45 AM to 3:00 PM (daily)**

Monday	Tuesday	Wednesday	Thursday	Friday
Check-in / Arrival	Check-in / Arrival	Check-in / Arrival	Check-in / Arrival	Check-in / Arrival
Morning circle Camp Rules / Energizer game	Energizer game	Energizer game	Energizer game	Energizer game
Recycle Paper	Pine + Apple	Colourful Tea	Solar Panel Car	Water Transfer
Watermelon Time				
Natural Dyes	Reduce, Reuse, Recycle Board Game	Gebogan Making	Terracotta / Clay Making	Balinese Instrument Kul-Kul
Lunch break				
Coconut Climbing	Soap Making	Organic chocolate making	Shelter Making	Campfire Sate Tempe
Being Human Journal & Reflection				



# Week 4

## The Junior Explorer Group (Lower School) 7 to 10 years old

**Camp Hours: 8:45 AM to 3:00 PM (daily)**

Monday	Tuesday	Wednesday	Thursday	Friday
Check-in / Arrival	Check-in / Arrival	Check-in / Arrival	Check-in / Arrival	Check-in / Arrival
Morning circle Camp Rules / Energizer game	Energizer game	Energizer game	Energizer game	Energizer game
Exploring Subak	Coconut Creation	Pine + Apple	Candle Making	Paku Pipit Making
Watermelon Time				
Coconut Party!	Reduce, Reuse, Recycle Board Game	Kite Making	Mandala Making	Echo Printing
Lunch break				
"Where Are You?" Compass Making	Traditional Jamu Making	From Seed to Table – Pak Rice	Let's Get Muddy!	Megibung
Being Human Journal & Reflection				



# ★ Week 5

## The Junior Explorer Group (Lower School) 7 to 10 years old

**Camp Hours: 8:45 AM to 3:00 PM (daily)**

Monday	Tuesday	Wednesday	Thursday	Friday
Check-in / Arrival	Check-in / Arrival	Check-in / Arrival	Check-in / Arrival	Check-in / Arrival
Morning circle Camp Rules / Energizer game	Energizer game	Energizer game	Energizer game	Energizer game
Recycle Paper	Colourful Tea	Pine + Apple	Exploring Subak	Water Transfer
Watermelon Time				
Coconut Party!	Reduce, Reuse, Recycle Board Game	Gebogan Making	Terracotta / Clay Making	Echo Printing
Lunch break				
Soap Making	Coconut Climbing	Organic Chocolate Making	Traditional Jamu Making	Campfire Sate Tempe
Being Human Journal & Reflection				



# ★ Week 6

## The Junior Explorer Group (Lower School) 7 to 10 years old

**Camp Hours: 8:45 AM to 3:00 PM (daily)**

Monday	Tuesday	Wednesday	Thursday	Friday
Check-in / Arrival	Check-in / Arrival	Check-in / Arrival	Check-in / Arrival	Check-in / Arrival
Morning circle Camp Rules / Energizer game	Energizer game	Energizer game	Energizer game	Energizer game
Coconut Creation	Pine + Apple	Candle Making	Solar Panel Car	Paku Pipit Making
Watermelon Time				
Natural Dyes	Kite Making	Mandala Making	Reduce, Reuse, Recycle T-Shirt to Bag	Balinese Instrument Kul- Kul
Lunch break				
Shelter Making	From Seed to Table – Pak Rice	“Where Are You?” Compass Making	Let’s Get Muddy!	Megibung
Being Human Journal & Reflection				



# Week 1

## The Change Makers Group (Upper School) 10 to 13 years old

Camp Hours: 8:45 AM to 3:00 PM (daily)

Monday	Tuesday	Wednesday	Thursday	Friday
Check-in / Arrival	Check-in / Arrival	Check-in / Arrival	Check-in / Arrival	Check-in / Arrival
Morning circle Camp Rules / Energizer game	Energizer game	Energizer game	Energizer game	Energizer game
Tower Challenge	Terracota/ Clay making	Recycle Paper	Book Binding	Mandala making
Watermelon Time				
Colorfull Tea	Solar Panel Power Bank	Lost In the Jungle Part II	Ogoh-Ogoh making	Cooking Class: Spices
Lunch break				
Lost In the Jungle Part I	Project Based Learning Topi Rimba	Bamboo Product Design Challenge	Metallurgy	Jamu Bar

Being Human Journal & Reflection



# Week 2

## The Change Makers Group (Upper School) 10 to 13 years old

Camp Hours: 8:45 AM to 3:00 PM (daily)

Monday	Tuesday	Wednesday	Thursday	Friday
Check-in / Arrival	Check-in / Arrival	Check-in / Arrival	Check-in / Arrival	Check-in / Arrival
Morning circle Camp Rules / Energizer game	Energizer game	Energizer game	Energizer game	Energizer game
Balinese offering	Reduce, Reuse, Recycle Bag from plastic	Kul Kul	Coconut Creation	Nature Walk
Watermelon Time				
Bamboo Water Transfer	Gebogan	WoodCarving	Coconut Party!	Pizza Making
Lunch break				
What color are you? Tie Dye	Metallurgy	Project Based Learning	Coconut Tree Climbing	Warung Bar
Being Human Journal & Reflection				



# Week 3

## The Change Makers Group (Upper School) 10 to 13 years old

Camp Hours: 8:45 AM to 3:00 PM (daily)

Monday	Tuesday	Wednesday	Thursday	Friday
Check-in / Arrival	Check-in / Arrival	Check-in / Arrival	Check-in / Arrival	Check-in / Arrival
Morning circle Camp Rules / Energizer game	Energizer game	Energizer game	Energizer game	Energizer game
Terracotta / Clay Making	Kul Kul	Mandala Making	Reduce, Reuse, Recycle Bag	Nature Walk
Watermelon Time				
Solar Panel Power Bank	Bamboo Water Transfer	Coconut Creation	Gebogan	Colorful Tea
Lunch break				
Metallurgy	Lost in the Jungle	Project Based Learning (Topi Rimba)	Coconut Tree Climbing	Warung Bar

Being Human Journal & Reflection





# Week 4

## The Change Makers Group (Upper School) 10 to 13 years old

Camp Hours: 8:45 AM to 3:00 PM (daily)

Monday	Tuesday	Wednesday	Thursday	Friday
Check-in / Arrival	Check-in / Arrival	Check-in / Arrival	Check-in / Arrival	Check-in / Arrival
Morning circle Camp Rules / Energizer game	Energizer game	Energizer game	Energizer game	Energizer game
Tower Challenge	Book Binding	Balinese Offering	Recycle Paper	Coconut Creation
Watermelon Time				
Bamboo Product Design Challenge	Ogoh-Ogoh Making	Wood Carving	Coconut Party!	Pizza Making
Lunch break				
Lost in the Jungle	Metallurgy	Project Based Learning	Jamu Bar	Nature Walk
Being Human Journal & Reflection				



# Week 5

## The Change Makers Group (Upper School) 10 to 13 years old

Camp Hours: 8:45 AM to 3:00 PM (daily)

Monday	Tuesday	Wednesday	Thursday	Friday
Check-in / Arrival	Check-in / Arrival	Check-in / Arrival	Check-in / Arrival	Check-in / Arrival
Morning circle Camp Rules / Energizer game	Energizer game	Energizer game	Energizer game	Energizer game
Mandala Making	Reduce, Reuse, Recycle Bag	Terracotta / Clay Making	Kul Kul	Book Binding
Watermelon Time				
Colorful Tea	Coconut Creation	Gebogan	Bamboo Water Transfer	Solar Panel Power Bank
Lunch break				
Project Based Learning	Coconut Tree Climbing	Lost in the Jungle	Metallurgy	Warung Bar
Being Human Journal & Reflection				



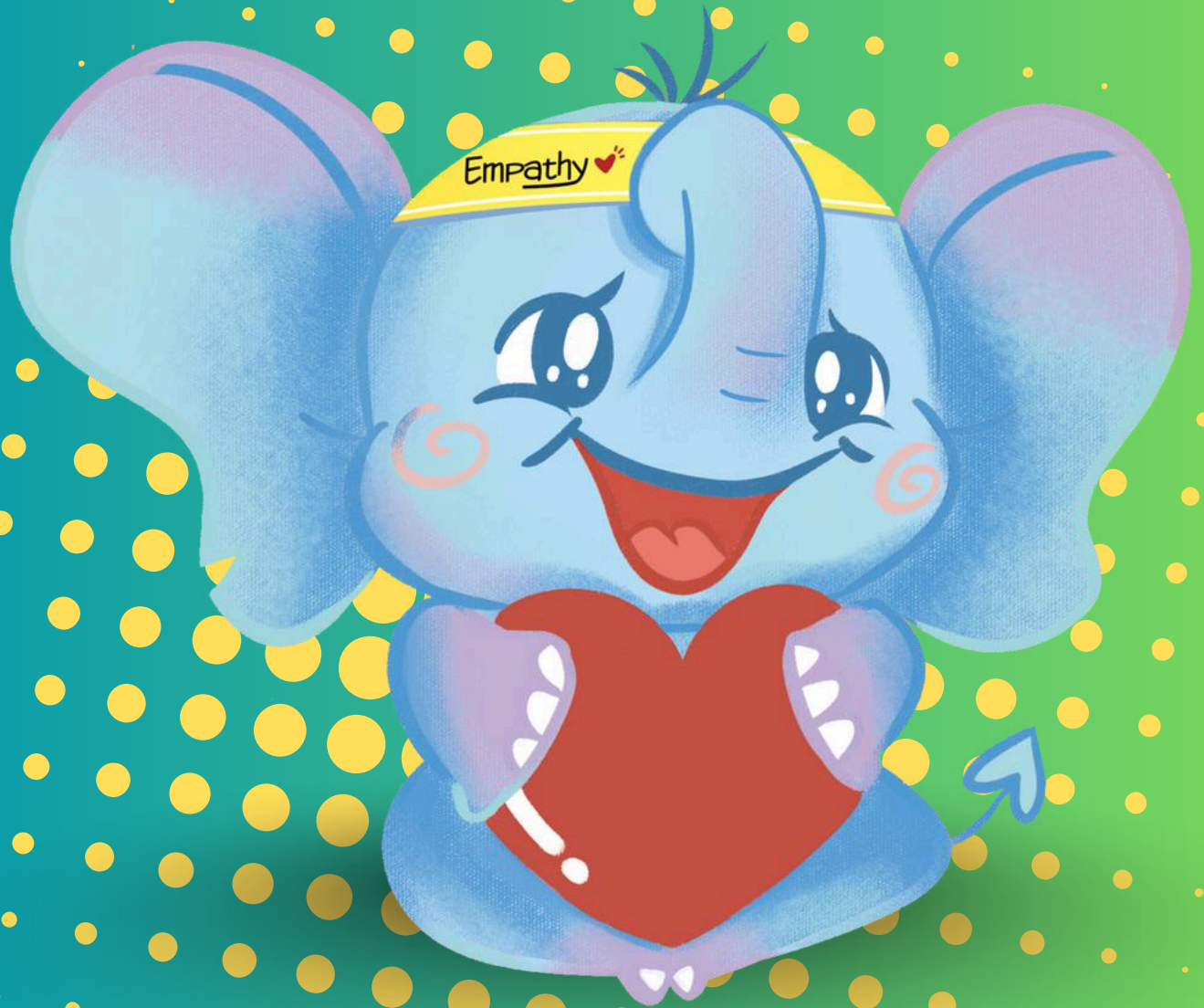
# Week 6

## The Change Makers Group (Upper School) 10 to 13 years old

Camp Hours: 8:45 AM to 3:00 PM (daily)

Monday	Tuesday	Wednesday	Thursday	Friday
Check-in / Arrival	Check-in / Arrival	Check-in / Arrival	Check-in / Arrival	Check-in / Arrival
Morning circle Camp Rules / Energizer game	Energizer game	Energizer game	Energizer game	Energizer game
Recycle Paper	Tower Challenge	Balinese Offering	Mandala Making	Nature Walk
Watermelon Time				
Ogoh-Ogoh Making	Coconut Party!	Wood Carving	Pizza Making	Gebogan
Lunch break				
Lost in the Jungle	Project Based Learning (Topi Rimba)	Metallurgy	Bamboo Product Design Challenge	Jamu Bar

Being Human Journal & Reflection



# See you at camp!

June 22 - July 31, 2026

Contact our admissions team to secure  
your spot or get more details!:

+62 812-3862-2573



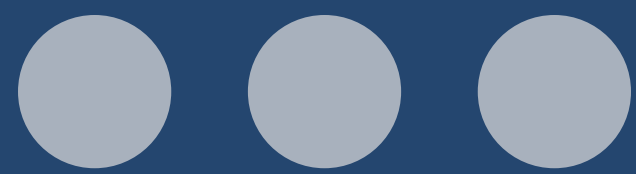
EMPATHY  
SCHOOL

# Summer Camp

June 22 - July 31 2026



Swipe to read more



# Why Empathy Summer Camp?



## Not your typical camp.

- Tailored “micro-tribes” by age & interest
- 100% outdoor, hands-on exploration
- Qualified educators
- Built-in Social-Emotional Learning (SEL)



# Immersive Learning Experiences





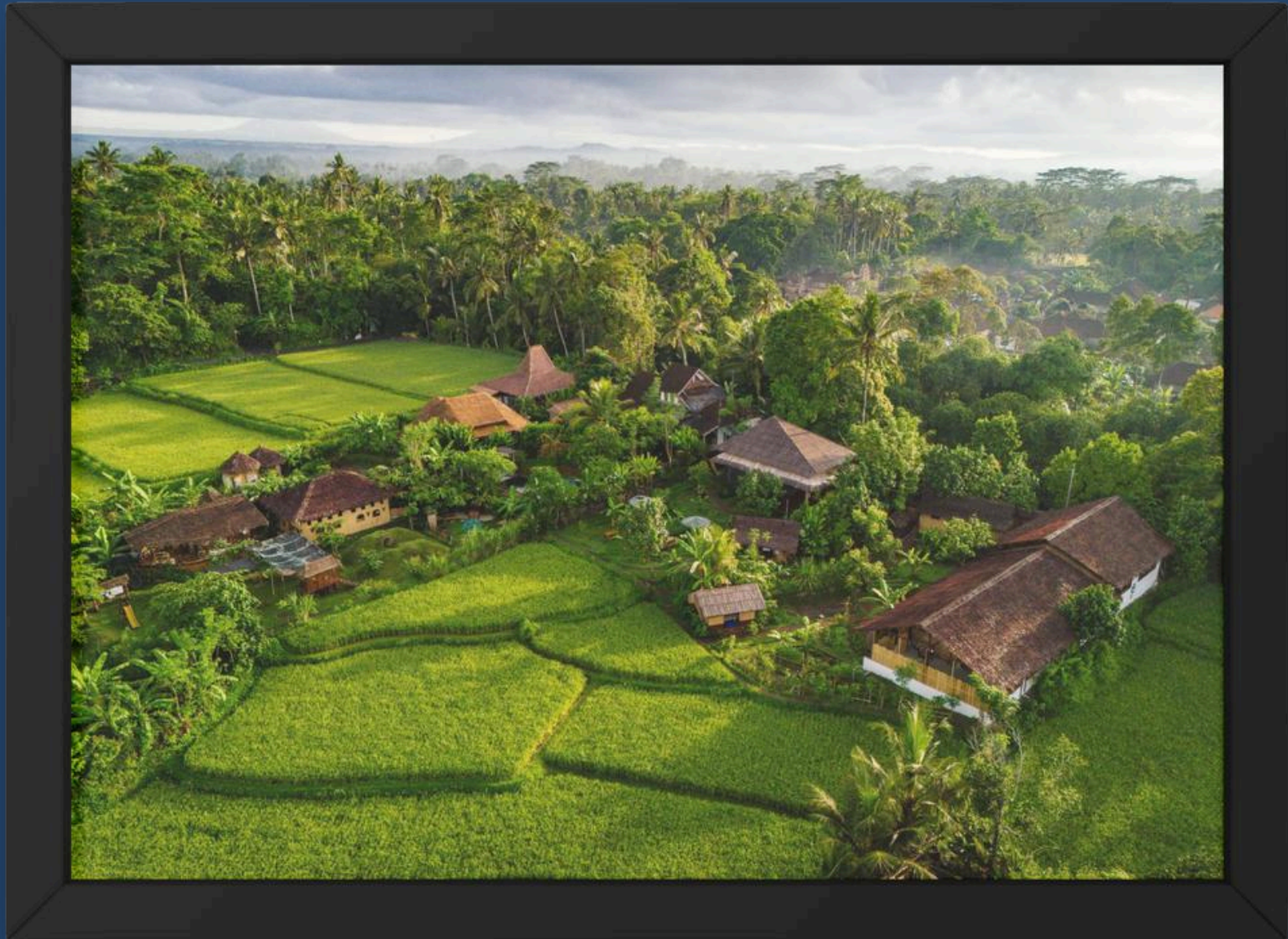
# THE LASTING IMPACT

- Confidence
- Resilience
- Collaboration skills
- Real-world problem solving
- Respect for nature & culture





# Our Campus



## LEARN IN NATURE

---

5-acre riverside campus

---

Near Ubud, Bali

---

Nature-rich environment

---



**Give your child a summer they'll remember!**

**Weekly Fee: IDR 9,900,000 per child**

**All fees include learning activities, lunch, snacks, drinks, and materials, with no mandatory additional costs.**



**SPACES ARE LIMITED  
REGISTER NOW**



[www.empathy.school](http://www.empathy.school)



[camp@empathy.school](mailto:camp@empathy.school)

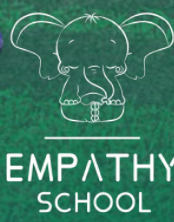


[@empathy.school](https://www.instagram.com/empathy.school)



# Summer Camp Shaped by Nature in Bali

June 22 – July 31 2026



[www.empathy.school](http://www.empathy.school)



EMPATHY  
SCHOOL

# Paper Recycling



turning used paper into something new while learning about sustainability, responsibility, and creative reuse.

[www.empathy.school](http://www.empathy.school)



EMPATHY  
SCHOOL

# Ceramics

hands-on clay work that builds focus, patience, and creative confidence through making and shaping.





EMPATHY  
SCHOOL

# Solar Car

Building and testing a small solar-powered car to learn about renewable energy, engineering, and problem-solving.

[www.empathy.school](http://www.empathy.school)



EMPATHY  
SCHOOL

# Bamboo Tower

Collaborating to design and build tall structures with bamboo, strengthening teamwork, planning, and critical thinking.

[www.empathy.school](http://www.empathy.school)



EMPATHY  
SCHOOL

# Making Kites

Crafting and flying kites while exploring balance, wind, creativity, and teamwork.

[www.empathy.school](http://www.empathy.school)

# Floral Mandala

Arranging natural materials into patterns to encourage mindfulness, emotional regulation, and self-expression.

# ...and so many more!

- Balinese Offering
- Fun Gardening: Soil Block
- Warung Bar
- Bugastic
- Art & Craft
- Hero Plants
- Bubble Making
- Rainbow Smoothies
- Organic Chocolate Making
- Presenting Rice
- Compass Making
- Scavenger Hunt: Flora & Fauna
- Tie Dye
- Mandala Making
- King and Queen of the Jungle
- Project-Based Learning: Topi Rimba
- Reduce, Reuse, Recycle
- Soap Making
- Exploring Subak
- My Dream Garden
- Pizza Making
- Shelter Making
- Gebogan Making
- Indonesian Heritage: Balinese Dance
- What's Your Spirit Animal? – Animal-Inspired Mask
- Nature Collage
- Coconut Creation
- Empathy Master Chef: Sup Buah
- Trash Walk: Waste Management
- Coconut Leaf Crown
- Frog Ladder
- Bamboo Product Design Challenge
- Padi & Seedbomb
- Eco Printing
- Colourful Tea
- Animal Puppet Making
- Ogoh-Ogoh Making
- Trash Walk: Waste Management
- Solar Panel Car / Solar Panel Power Bank
- Candle Making
- Bamboo Water Transfer
- Reduce, Reuse, Recycle: Board Game
- Traditional Jamu Making
- Coconut Climbing
- Balinese Instrument: Kul-Kul
- T-Shirt to Bag / Bag from Plastic
- Metallurgy
- Journal & Reflection
- Megibung
- Book Binding
- Tower Challenge

You don't want to miss it 😊

[www.empathy.school](http://www.empathy.school)

# EMPATHY SCHOOL Summer Camp

June 22 – July 31 2026

Camp Hour: 09:00 AM – 03:00 PM

Weekly Fee: **IDR 9,900,000** per child  
All fees include learning activities, lunch, snacks, drinks,  
and materials, with **no mandatory additional costs.**



**REGISTER NOW!**

Register or Learn More:

+62 853-3722-7790 [camp@empathy.school](mailto:camp@empathy.school)

# Tuition Fee

Academic Year 2026/2027

	Term (2.5 Months)	Yearly
Pre - Kindergarten	39,807,476	136,403,300
Kindergarten	44,603,088	148,679,597
Grade 1	45,912,537	152,284,385
Grade 2-3	46,239,898	154,135,729
Grade 4-5	47,058,303	156,555,729
Grade 6	47,999,249	159,686,843
Grade 7-8	54,015,041	178,182,180

\*Application Fee : 2,500,000

Term Dates				
	Semester 1		Semester 2	
	Term 1	Term 2	Term 3	Term 4
Start	August 10	October 19	January 18	April 5
End	October 9	December 18	March 25	June 18

At Empathy School, we believe in **transparency and value**. That's why your child's tuition covers everything they need to thrive without surprise fees.

- **Nutritious Plant** - Based Lunch served daily to fuel learning and play.
- **School T-Shirt** – one per term, included for every student. **Books &**
- **Learning Resources Creative Learning Materials** for art, science, and hands-on projects.
- **Full Access to School Facilities** – including our trampoline park (Bounce Lab) and swimming pool for active, healthy fun.

# ADMISSION PROCEDURE

2



## Fill the Application Form

Complete our online admission form with your child's details and preferred start date. Please note there's an **application fee to begin your child's admission process**

1



## Book a tour or Zoom call

Whether you're nearby or abroad, this is the best way to get a real feel for Empathy School, meet our team, and ask any questions before starting your enrollment journey.

3



## Academic Review

Our academic team carefully reviews your child's school records and learning profile to determine the most appropriate **grade placement**.

4



## Admission Announcement

The official Letter via email from [students@empathy.school](mailto:students@empathy.school)  
This letter will include your child's **grade placement and important school information**.

Enrollment Form



5



## Tuition Payment

For accepted students, an official tuition invoice will be issued by the Admissions Office.

