

Ma-linki

Kindergarten Bali

Inspired by kids' dreams

2025-2026



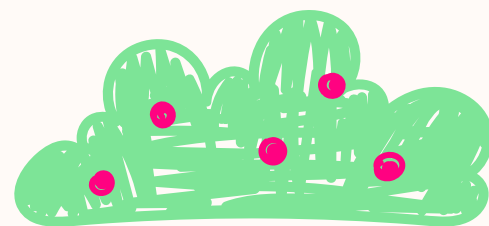
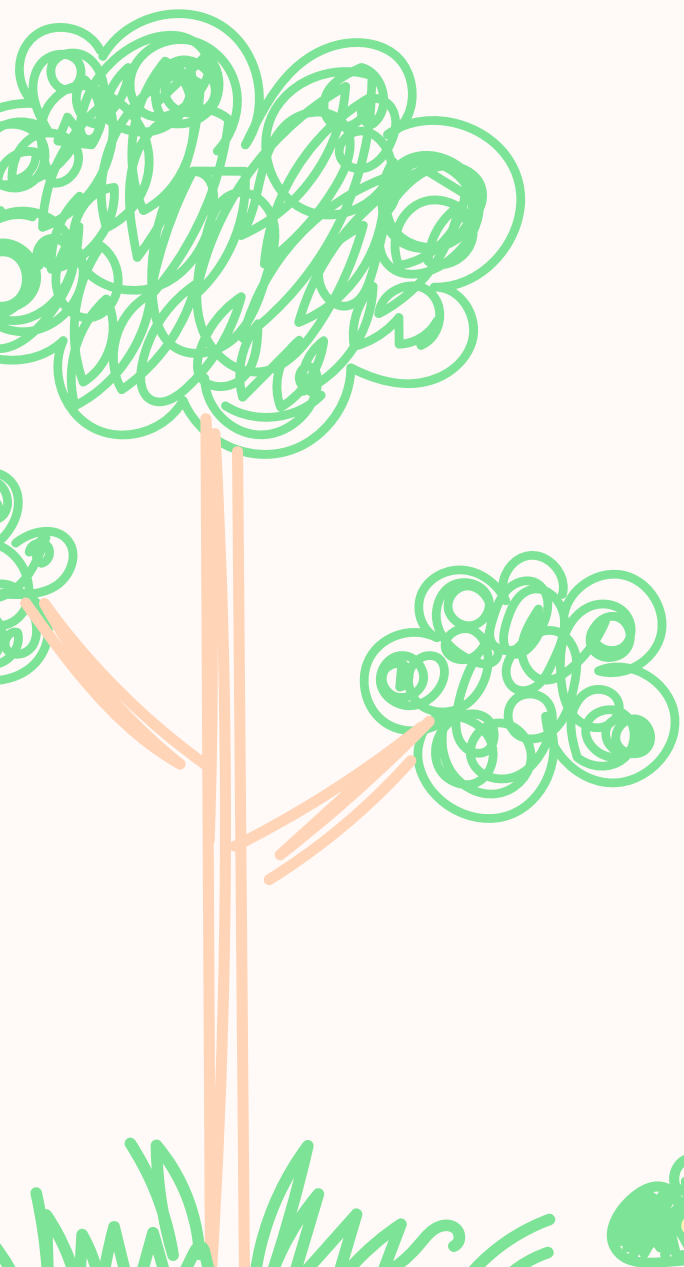


## About us

# Malinki Kindergarten

is an international preschool in Bali(Kerobokan Area) for children aged 1,5 to 7 – created with love for kids, nature, and culture since 2020.

We combine proven early development methods, a fully English-speaking environment, and a gentle approach to adaptation, so every child feels safe, confident, and happy.



**Malinki Kindergarten** operates on the basis of the **concept**

## CARETHINK

a harmonious blend of empathy and intellect, where nurturing care meets thoughtful reflection, fostering a compassionate and insightful approach to growth and learning.

“C”- communication

“A”- adaptability

“R”- respect

“E”- empathy

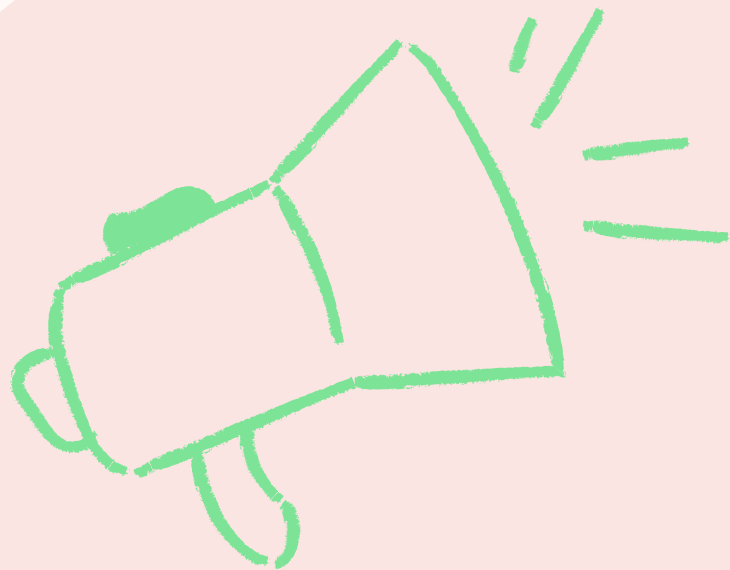
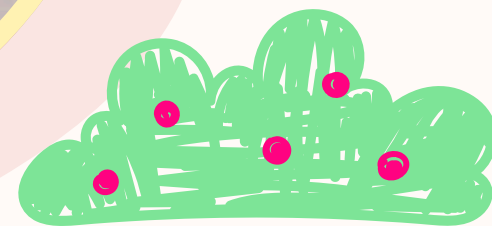
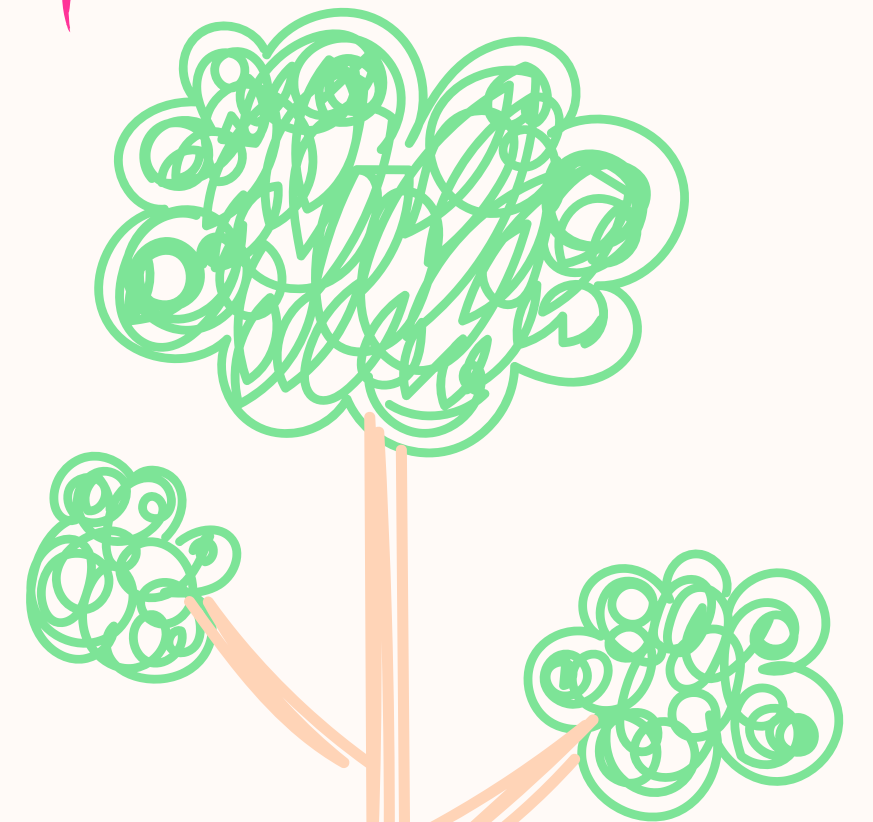
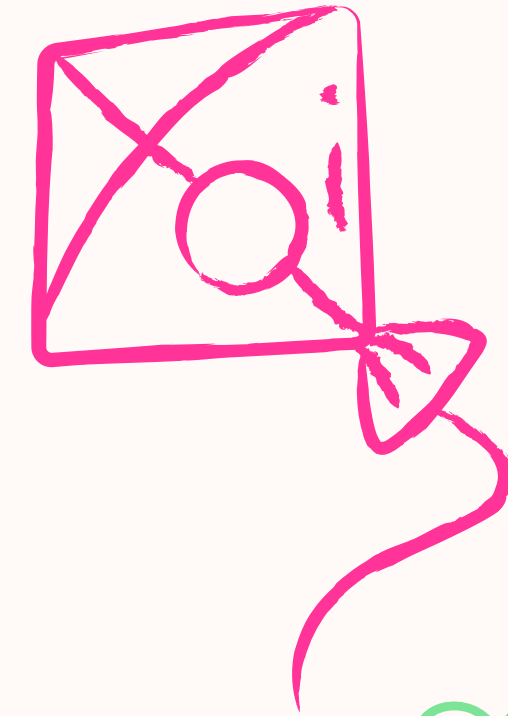
“T”- trust

“H”- healthcare

“I” - inspiration

“N”- nurturing

“K”- kindness





well done!

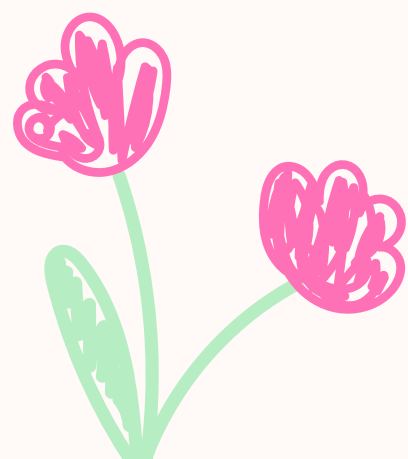


Ma-Linki  
Kindergarten Bali

## Our preschool offers:

- 🌿 A warm, home-like atmosphere filled with care
- 🌍 A multilingual and multicultural environment
- 🎨 Creative development, project-based learning, and play-centered education
- 🏡 A cozy natural space with playgrounds, learning areas, and a garden

We help children discover their talents, grow with kindness, and explore the world with joy.





# SCHOOL CALENDAR 2025-2026

academic year



## SEPTEMBER

Mo	Tu	We	Th	Fr	Sa	Su
1	2	3	4	5	6	7
8	9	10	11	12	13	14
15	16	17	18	19	20	21
22	23	24	25	26	27	28
29	30					

1 Sep: School Event

## OCTOBER

Mo	Tu	We	Th	Fr	Sa	Su
		1	2	3	4	5
6	7	8	9	10	11	12
13	14	15	16	17	18	19
20	21	22	23	24	25	26
27	28	29	30	31		

31 Oct: Halloween

## NOVEMBER

Mo	Tu	We	Th	Fr	Sa	Su
					1	2
3	4	5	6	7	8	9
10	11	12	13	14	15	16
17	18	19	20	21	22	23
24	25	26	27	28	29	30

19-20 Nov: DAY OFF  
Galungan Ceremony

## DECEMBER

Mo	Tu	We	Th	Fr	Sa	Su
1	2	3	4	5	6	7
8	9	10	11	12	13	14
15	16	17	18	19	20	21
22	23	24	25	26	27	28
29	30	31				

25 Dec: Christmas

31 Dec: DAY OFF

## JANUARY

Mo	Tu	We	Th	Fr	Sa	Su
						1
			2	3	4	
5	6	7	8	9	10	11
12	13	14	15	16	17	18
19	20	21	22	23	24	25
26	27	28	29	30	31	

1-2 Jan : DAY OFF New Year

## FEBRUARY

Mo	Tu	We	Th	Fr	Sa	Su
						1
2	3	4	5	6	7	8
9	10	11	12	13	14	15
16	17	18	19	20	21	22
23	24	25	26	27	28	

## MARCH

Mo	Tu	We	Th	Fr	Sa	Su
						1
2	3	4	5	6	7	8
9	10	11	12	13	14	15
16	17	18	19	20	21	22
23	24	25	26	27	28	29
30	31					

8 Mar: School Event

18 Mar: Half Day 9:00- 13.00

19-20 Mar: DAY OFF Nyepi Day

## APRIL

Mo	Tu	We	Th	Fr	Sa	Su
						1
		1	2	3	4	5
6	7	8	9	10	11	12
13	14	15	16	17	18	19
20	21	22	23	24	25	26
27	28	29	30			

## MAY

Mo	Tu	We	Th	Fr	Sa	Su
						1
				1	2	3
4	5	6	7	8	9	10
11	12	13		15	16	17
18	19	20	21	22	23	24
25	26	27	28	29	30	31

29 May School Event

# Summer Program: “The World Around Us”

Project-Based Learning

## JUNE

Mo	Tu	We	Th	Fr	Sa	Su
1	2	3	4	5	6	7
8	9	10	11	12	13	14
15	16	17	18	19	20	21
22	23	24	25	26	27	28
29	30					

16-17 JUNE: DAY OFF  
Galungan Ceremony

## JULE

Mo	Tu	We	Th	Fr	Sa	Su
		1	2	3	4	5
6	7	8	9	10	11	12
13	14	15	16	17	18	19
20	21	22	23	24	25	26
27	28	29	30	31		

## AUGUST

Mo	Tu	We	Th	Fr	Sa	Su
					1	2
3	4	5	6	7	8	9
10	11	12	13	14	15	16
17	18	19	20	21	22	23
24	25	26	27	28	29	30



Follow our Instagram  
for the latest  
events



Our summer program is less focused on traditional academic lessons and more focused on games, creativity, research, experiments, craft projects, teamwork, and **project-based learning**.



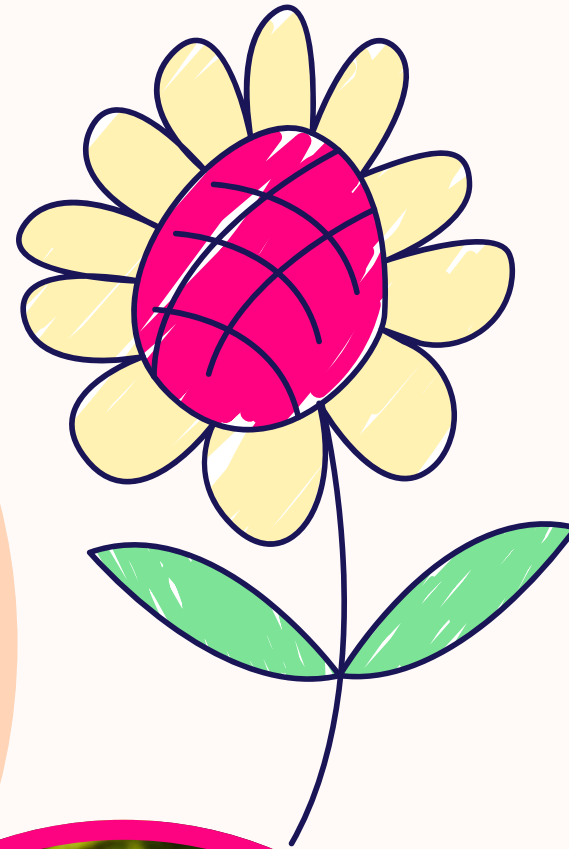
# Summer Program: “The World Around Us”

Project-Based Learning



During the three summer months, children will learn about:

- Healthy and unhealthy food
- Nature, plants, animals, and life cycles
- Global warming and how we can help the Earth
- Reduce, reuse, recycle
- Natural disasters and basic safety rules
- Ecosystems, biomes, and different habitats
- The four seasons and weather changes
- Nature walks and observation projects
- Wonderful Indonesia – islands, animals, culture, and landmarks
- Wonders of the World and famous places around the globe





# Daily Schedule

## Monday-Friday 9:00-17:00

9:00-9:45 – Kids' arrival, Morning talks

9.45-10:30 – Morning circle, active games, yoga

10:30.-11:00 – Breakfast

11:00-12:30 – Toddler class (1,5 y.o- 2y.o)/ First Step (2 y.o- 3y.o) / Little Explorers (4y.o) /  
Preschool Adventurers (5y.o – 7y.o)

12:30-13:15 – Lunch time

13:15-14:00 – Preschool adventurers class (5-7 y.o)

13:15-14:30 – Afternoon nap (younger kids)

14:30-15:00 – After nap warming up, swimming

15:00-15:30 – Second lunch

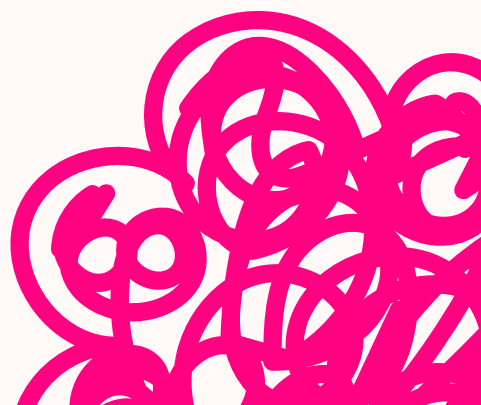
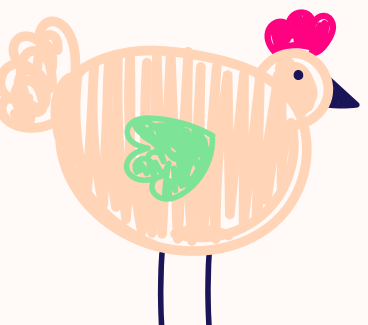
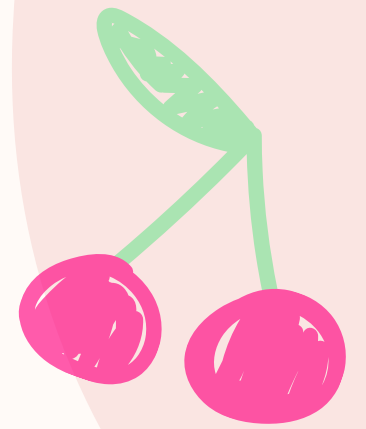
15:30-16:20 – Toddler class (1,5 y.o- 2y.o) / First step (2 y.o- 3y.o) / Little explorers (4y.o) /  
Preschool adventurers (5y.o – 7y.o)

16:20-16:40 – Snack time

16:40-17:00 – Afternoon meeting, Daily achievements

Extra time(evening club) upon request

Mon-Fri 17:00-19:00 – Art & Craft studio, Role-play games, Dinner



ABC

# About educational program

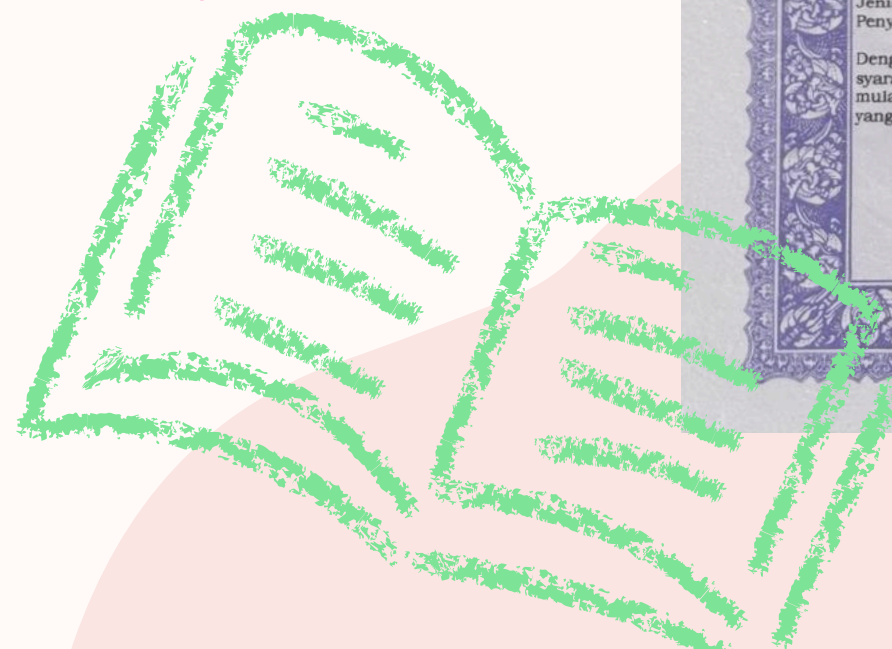
Our kindergarten holds an official Indonesian government license, ensuring the high standards of our educational curriculum.

- Designed by educators with 20+ years of experience
- Based on leading global methods and trends
- Meets standards for entry into Cambridge, PYP(IB), and other top international schools
- Balance of academic and creative development

We give children a strong foundation for a successful future.

123

Ma-Linki  
Kindergarten Bali



# Toddler group

**A stress free program to prepare your toddler for kindergarten!**

Staying with Mom or Nanny

A safe and joyful space where your child can learn and play together with a caregiver.

Activities include:

- Fun, sensory games
- Creative arts & crafts
- Engaging physical activities

**Visit hourly on Mon, Wed, and Fri, 9 Am - 1 PM**  
**50.000 IDR per hour**



# Weekly Timetable: Toddler group 1-2y.o

## Monday

11:00–11:20

Montessori class

15:30–16:20

Experimentarium

## Tuesday

11:00–11:20

Sensory play

15:30–16:20

Playdough/ paper  
art

## Wednesday

11:00–11:45

PE lesson

15:30–16:20

Fine Arts

## Thursday

11:00–11:20  
Speaking skills

15:30–16:20

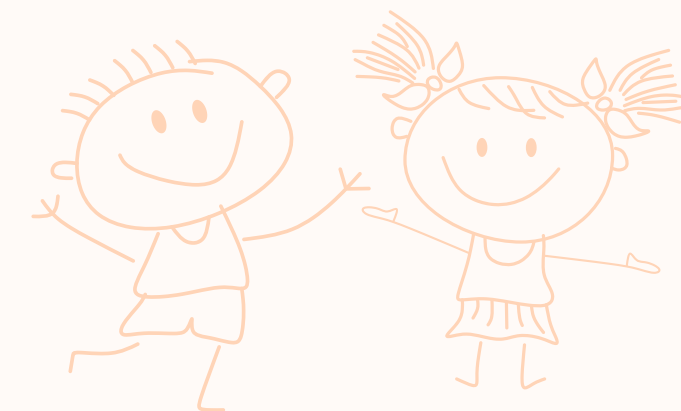
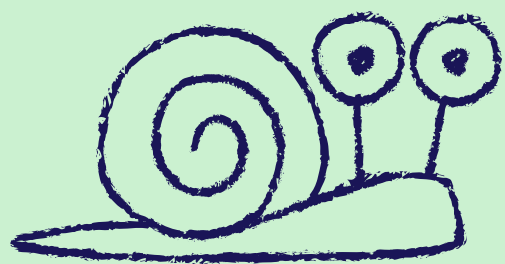
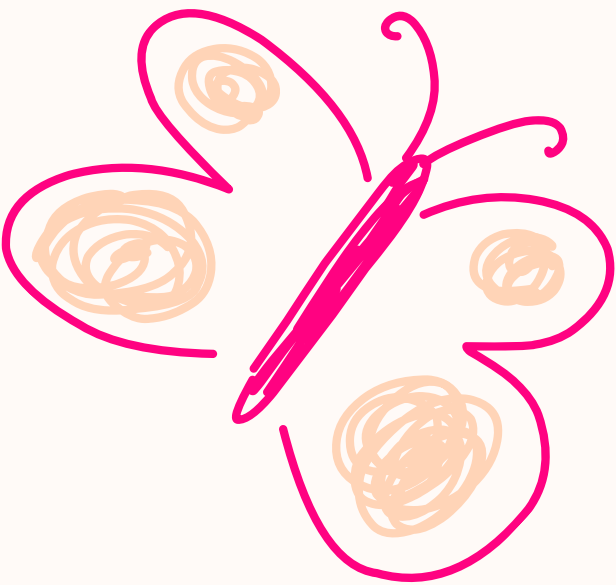
Music

## Friday

11:00–11:20  
Motor skills

15:30–16:20

“Little chefs” fun  
cooking



# Weekly Timetable: First step 2-3.5 y.o



## Monday

11:00–11:30

Montessori class

15:30–16:20

Experimentarium

## Tuesday

11:00–11:30

Speaking skills

15:30–16:20

Playdough/ paper art

## Wednesday

11:00–11:45

PE lesson

15:30–16:20

Fine Arts

## Thursday

11:00–11:30

Speaking skills

15:30–16:20

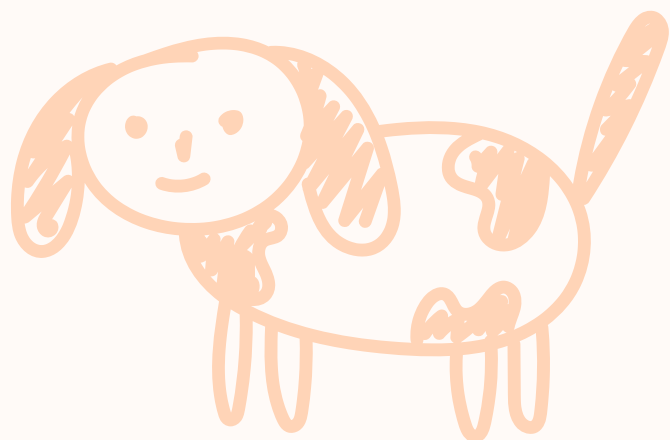
Music

## Friday

11:00–11:30  
Motor skills

15:30–16:20

“Little chefs” fun cooking



# Weekly Timetable: 3,5-5 y.o

## Monday

11:30-12:00

English

15:30-16:20

Experimentarium

## Tuesday

11:30-12:00

Math and logic

15:30-16:20

Craft class

## Wednesday

11:00-11:45

PE class

15:30-16:20

Fine arts

## Thursday

11:30-12:00

Speaking skills

15:30-16:20

Music

## Friday

11:30-12:00

Motor skills

15:30-16:20

"Little chefs" fun  
cooking



# Weekly Timetable: 5-7 y.o

## Monday

12:00-12:30

English

13:15-14:00

Playdough & polymer clay

15:30-16:20

Around the world/  
experimentarium

## Tuesday

12:00-12:30

Maths

13:15-14:00

Emotional / Financial  
intelligence

15:30-16:20

Craft class

## Wednesday

11:00-11:45

PE class

13:15-14:00

English speaking

15:30-16:20

Fine Arts

## Thursday

12:00-12:30

Maths/logics

13:15-14:00

English writing skills

15:30-16:20

Music

## Friday

12:00-12:30

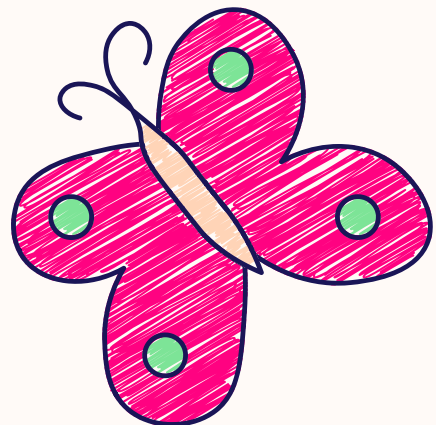
English review

13:15-14:00

Lego class

15:30-16:20

"Little chefs"  
fun cooking



\*classes during the week can be rescheduled or changed  
\*\*classes with the sign / are held once in 2 weeks  
\*\*\*pre school classes (Math, Reading, Writing, English)  
can be held individually at additional cost

# HEALTHY DIET

We provide well balanced healthy meals cooked in our own kitchen daily. Children will also be involved in the cooking process to help broaden their skills and to teach them the importance of learning to cook for yourself.



## Menu \*

(standard or vegetarian)  
\*all meat dishes are cooked separately

### Mon.

- Breakfast : Waffle and fruits
- Lunch : Rice , chicken tofu veggie soup and fresh veggies
- Second Lunch : Spaghetti with omelette and fresh veggies
- Snack : Pancake and fruits

### Tue.

- Breakfast : Smoothie and fruit
- Lunch : Mashed potatoes, chicken cutlets , sauted carrots and fresh veggies
- Second Lunch : Rice with chicken and fresh veggies
- Snack : Rice crackers and fruits

### Wed.

- Breakfast : Banana bread , boiled egg and fruits
- Lunch : Rice noodles , omelette, veggie soup and fresh veggies
- Second Lunch : Macaroni and fresh veggies
- Snack : Jelly and fruits

### Thurs.

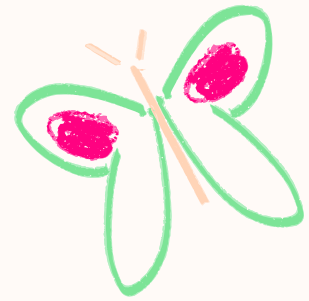
- Breakfast : Carrots bread and fruit
- Lunch : Rice with nori , chicken cutlets , broccoli and fresh veggies
- Second Lunch : Penne ziti "pasta" and fresh veggies
- Snack : Waffles and fruits

### Fri.

- Breakfast : Crepes and fruit
- Lunch : Japanese sushi, corn, edamame and fresh veggies
- Second Lunch : Potato soup and fresh veggies
- Snack : Cooking class and fruits

- Additional dishes: Homemade pizza, burgers, sushi, tacos, hash browns
- Snacks: Dried fruits, healthy snacks, homemade ice-cream, popcorn
- On request: Oatmeal or rice porridge with fruit for breakfast
- The menu can be changed during the week

# Price list



## FULL DAY (From 9 - 17)

- 6 Months: 42.000.000 + 1.000.000 (Entrance Fee)
- 3 Months: 22.500.000 + 1.000.000 (Entrance Fee)
- 1 Month: 8.500.000 + 1.000.000 (Entrance Fee)

## HALF DAY (From 9 - 13 or 13 - 17)

- 1 Month: 6.500.000+1.000.000 (Entrance Fee)
- 2 Kids - 1 Month: 11.500.000+2.000.000 (Entrance Fee)

## MIDDLE DAY (From 9 - 15)

- 1 Month: 7.500.000 + 1.000.000 (Entrance Fee)
- 2 Kids - 1 Month: 14.000.000 + 2.000.000 (Entrance Fee)

## Trial week (5 visits any days on your choice)

- Full day: 2.500.000
- Middle: 2.300.000
- Half day: 2.000.000

## DAY PASS

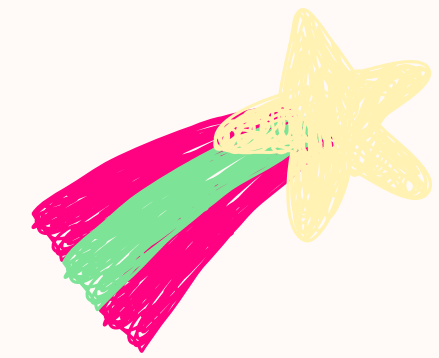
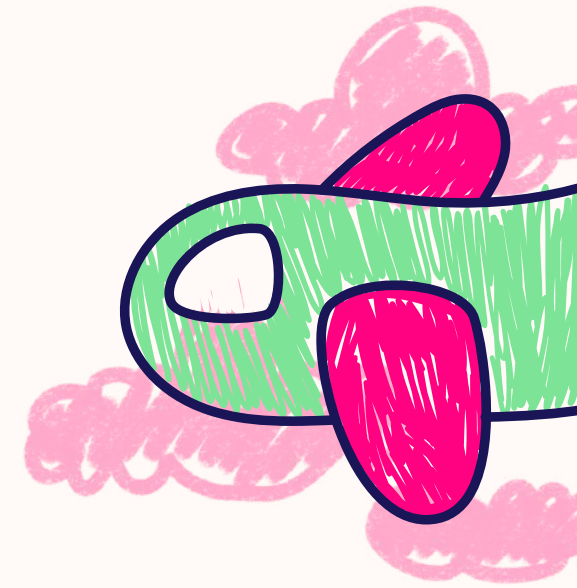
- Full day: 550.000
- Middle: 500.000
- Half day: 450.000

## Prices for 2 kids FULL DAY with a DISCOUNT:

- 1 Month: 16.000.000+2.000.000 (Entrance Fee)
- 3 Months: 42.000.000+2.000.000 (Entrance Fee)
- 6 Months: 76.000.000+2.000.000 (Entrance Fee)

\*Additional hours available from 7-9 and 19-21, for the price 100.000/hour, pre-registration is required.

Please note that all memberships are non-refundable and not transferable to third parties.





# Sign up



## for free trial day



[www.ma-linki.com](http://www.ma-linki.com)



[@ma\\_1inki](https://www.instagram.com/ma_1inki)



+62 82146094454



[@ma\\_1inki](https://www.telegram.com/@ma_1inki)

